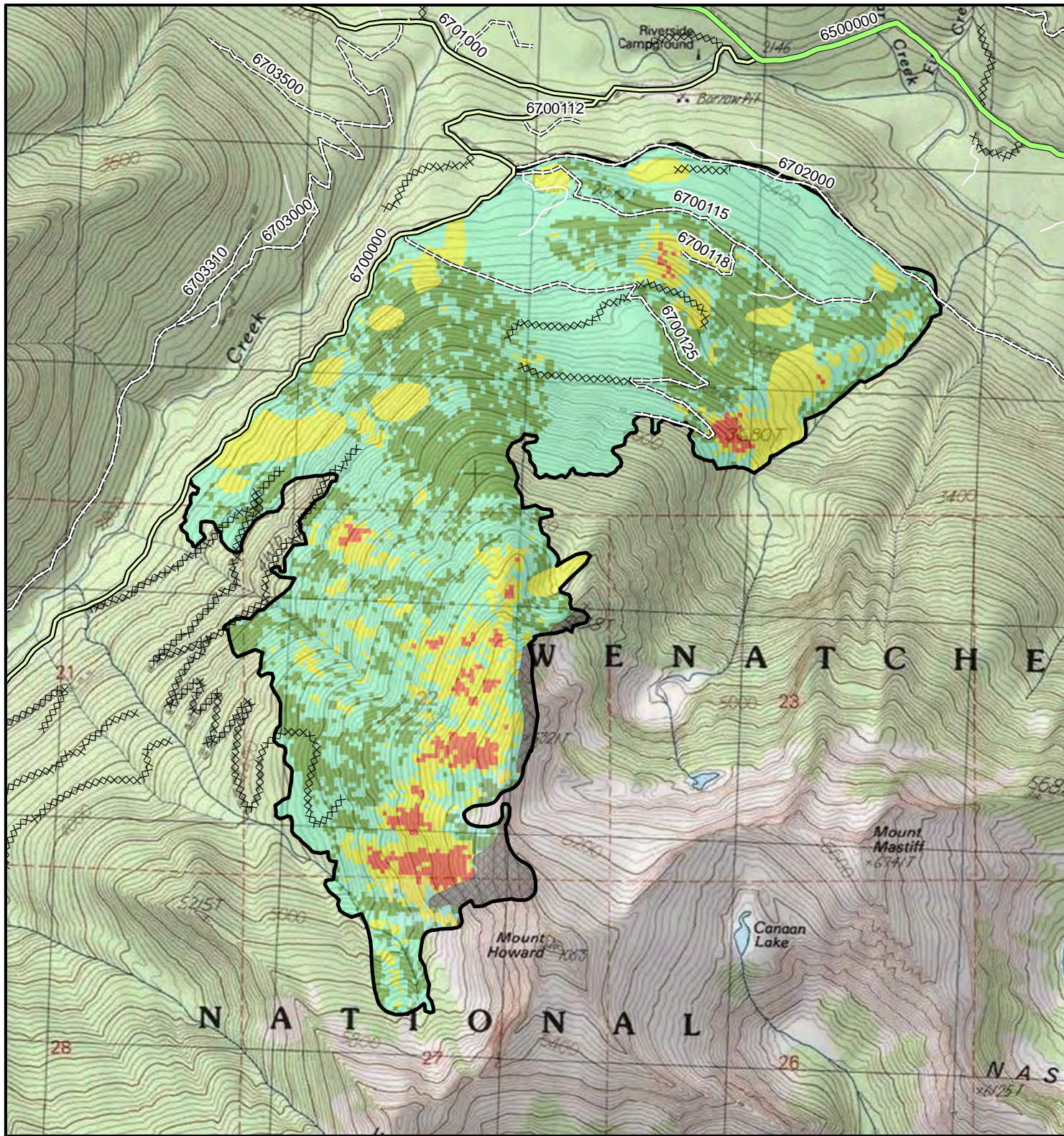




Burn Severity - Nason Fire

Nason BAER - Okanogan-Wenatchee National Forest



0 0.125 0.25 0.5 Miles

Disclaimer

This product is a product of USFS BAER rapid assessment. Further information concerning the accuracy and appropriate uses of this data may be obtained from the various sources. The USDA Forest Service, makes no warranty, expressed or implied, including the warranties of merchantability and fitness for a particular purpose, nor assumes any legal liability or responsibility for the accuracy, reliability, completeness or utility of these geospatial data, or for the improper or incorrect use of these geospatial data. These geospatial data and related maps or graphics are not legal documents and are not intended to be used as such. The data and maps may not be used to determine title, ownership, legal descriptions, boundaries, legal jurisdiction, or restrictions that may be in place on either public or private land. Natural hazards may or may not be depicted on the data and maps, and land users should exercise due caution. The data is dynamic and may change over time. The user is responsible to verify the limitations of the geospatial data and to use the data accordingly.

Burn Severity		Final_Perimeter	
Classification		Final_Perimeter	
High		<Null>	
Moderate		4 - MODERATE DEGREE OF USER COMFORT	
Low		3 - SUITABLE FOR PASSENGER CARS	
Unburned		2 - HIGH CLEARANCE VEHICLES	
Rock Outcrop		1 - BASIC CUSTODIAL CARE (CLOSED)	



WASHINGTON
Okanogan County



Date: 10/1/2021

