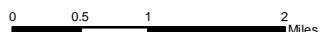
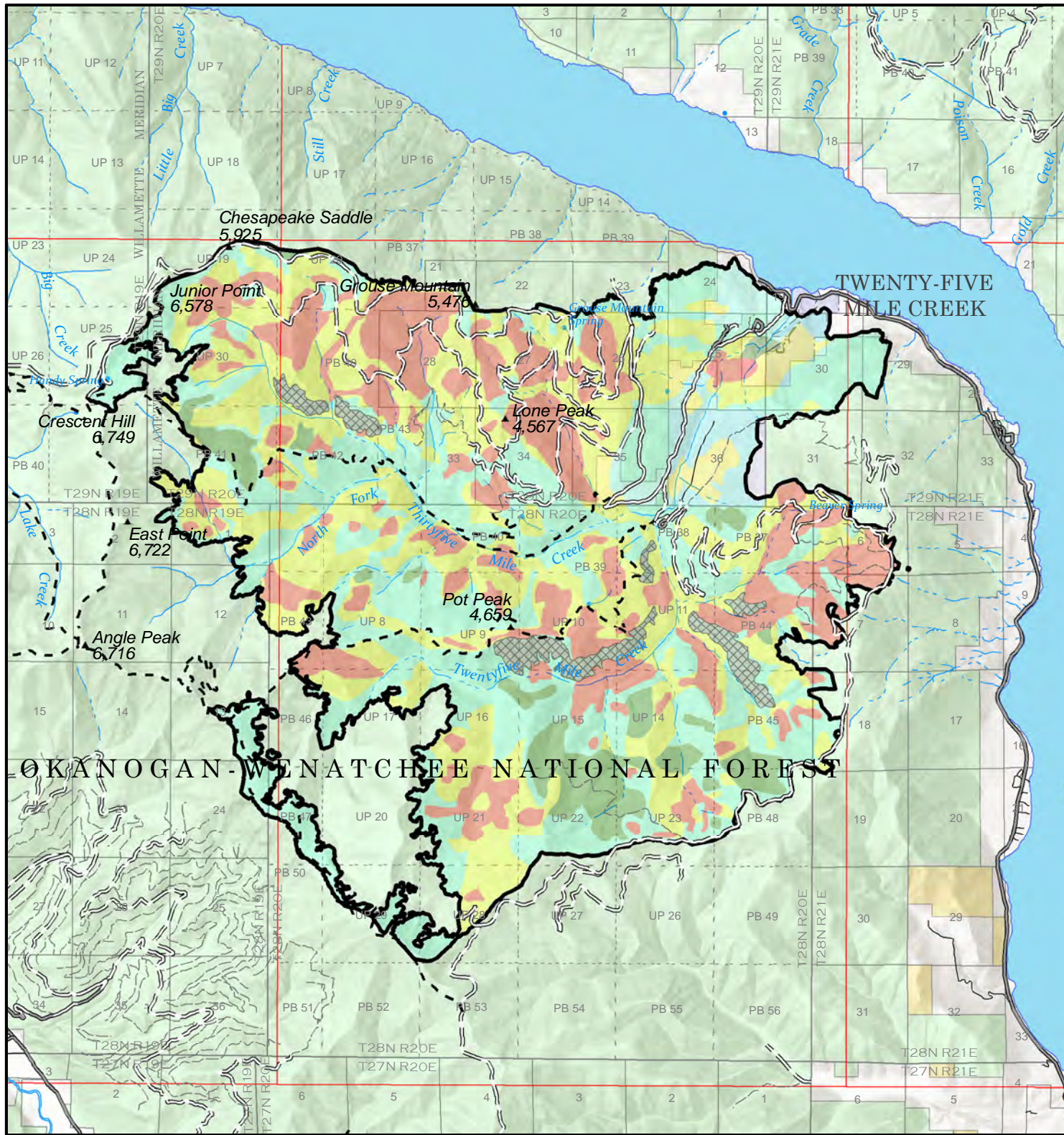




Burn Severity - Twenty-Five Mile Fire

Twenty-Five Mile BAER - Okanogan-Wenatchee National Forest



Disclaimer

This product is a product of USFS BAER rapid assessment. Further information concerning the accuracy and appropriate uses of this data may be obtained from the various sources. The USDA Forest Service, makes no warranty, expressed or implied, including the warranties of merchantability and fitness for a particular purpose, nor assumes any legal liability or responsibility for the accuracy, reliability, completeness or utility of these geospatial data, or for the improper or incorrect use of these geospatial data. These geospatial data and related maps or graphics are not legal documents and are not intended to be used as such. The data and maps may not be used to determine title, ownership, legal descriptions, boundaries, legal jurisdiction, or restrictions that may be in place on either public or private land. Natural hazards may or may not be depicted on the data and maps, and land users should exercise due caution. The data is dynamic and may change over time. The user is responsible to verify the limitations of the geospatial data and to use the data accordingly.

Burn Severity

Classification	Sept 17 Perimeter	Lake
High	Trails	Forest Service Land
Moderate	Highway	State Public Land
Low	County Roads	Other State Land
Unburned	City, Private Roads	Bureau of Land Management Land
Rock Outcrop	Paved or Gravel Road	
	Dirt Road	
	Unimproved Road	

WASHINGTON Okanogan County



Date: 9/27/2021

